

NIGIRI SUSHI/SASHIMI

(prices for nigiri two or sashimi three pieces)



OTORO



AKAMI



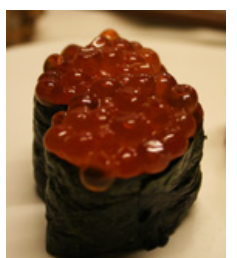
SUZUKI



SALMON



UNAGI



IKURA



TOBIKO

AKAMI	Tuna red	£4.70	EBI	Shrimp	£3.90
CHU TORO	Semi fat tuna	£6.90	AMAEBI	Sweet shrimp	£4.30
O TORO	Fatty tuna	£7.90	IKA	Squid	£3.90
SAKE	Salmon	£3.90	TAKO	Octopus	£3.90
HAMACHI	Yellowtail	£6.90	IKURA	Salmon roe	£6.90
SUZUKI	Sea bass	£4.20	UNAGI	Fresh water eel	£5.70
SABA	Mackerel	£3.90	TOBIKO	Flying fish roe	£4.20
HOTATE	Scallop	£4.90	HOKKIGAI	Surf clam	£4.20

ABURI BEEF NIGIRI (2 pieces)
Lightly seared Rib-eye with creamy chilli and spring onion £5.20

NIGIRI SELECTION £12.20

6 KIND

SASHIMI MORIAWASE
(mixed chef's selection) £16.20

4 kind (12 pieces)
(includes salmon, tuna)

HOUSE SET £23.90
3 kind sashimi (9 pieces), 5 nigiri, 6 pieces salmon avocado maki



AMAEBI



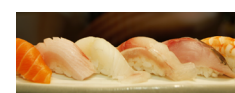
EBI



HOKKIGAI



SASHIMI MORI



NIGIRI SELECTION



MIXED SET